

VACUUM PUMP / COMPRESSOR



Hose flange

Model No.	D mm	d mm	H mm	L mm	P mm	Weight (kg)	Material	Diagram
OD-1-32	32	5.5	29	35	50	0.05	Aluminum	1
OD-2-32	32	6	31	38	64	0.08	Aluminum	1
OD-2-37	37	6	31	38	64	0.07	Aluminum	1
OD-2-44	44	6	37	44	67	0.08	Aluminum	1
OD-3-51	51	6	31	38	67	0.09	Aluminum	1
OD-4-50	50	7	44	52	83	0.14	Aluminum	1
OD-4-57	57	7	58	65	83	0.18	Aluminum	1
OD-3-44	44	7	28	57	67	0.11	Aluminum	2
OD-3-55	55	7	52	105	67	0.28	Aluminum	2

DIAGRAM 1

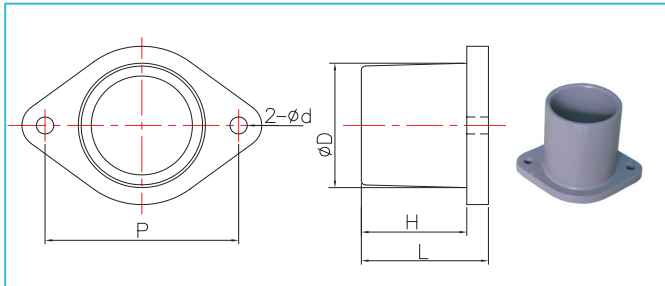
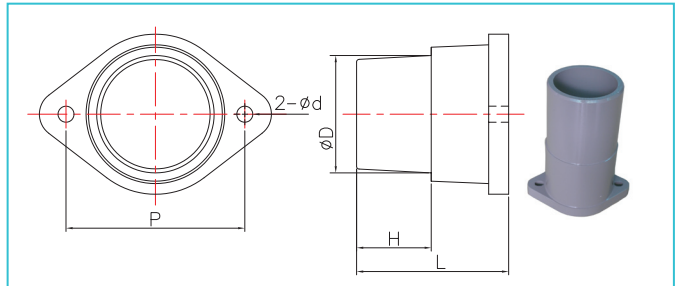


DIAGRAM 2



Thread flange

Model No.	D mm	d mm	H mm	L mm	P mm	Weight (kg)	Material	Diagram
T10-1	1"	5.5	18	23	50	0.05	Aluminum	3
T12-2	1 1/4"	6	22	29	64	0.07	Aluminum	3
T15-3	1 1/2"	6	24	31	67	0.08	Aluminum	3
T20-5	2"	7	18	25	83	0.10	Aluminum	3
T25-7	2 1/2"	7	16	31	130	0.80	Cast Iron	4
T40-9	4"	9	29	36	150	1.10	Cast Iron	3

DIAGRAM 3

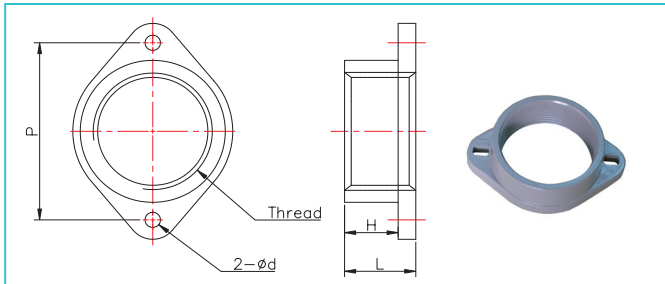
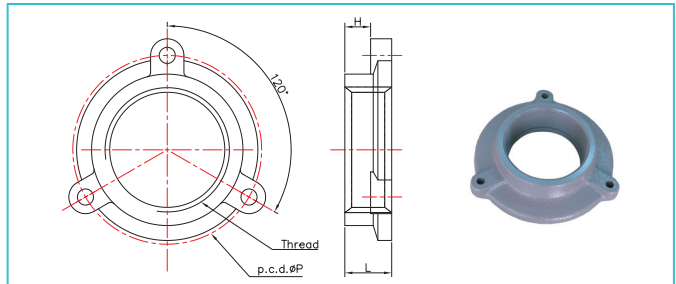


DIAGRAM 4

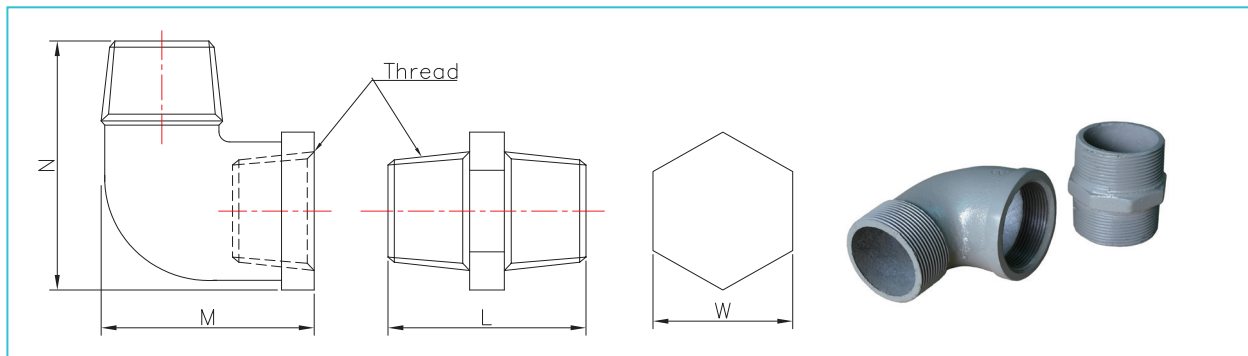


Elbow & Bend

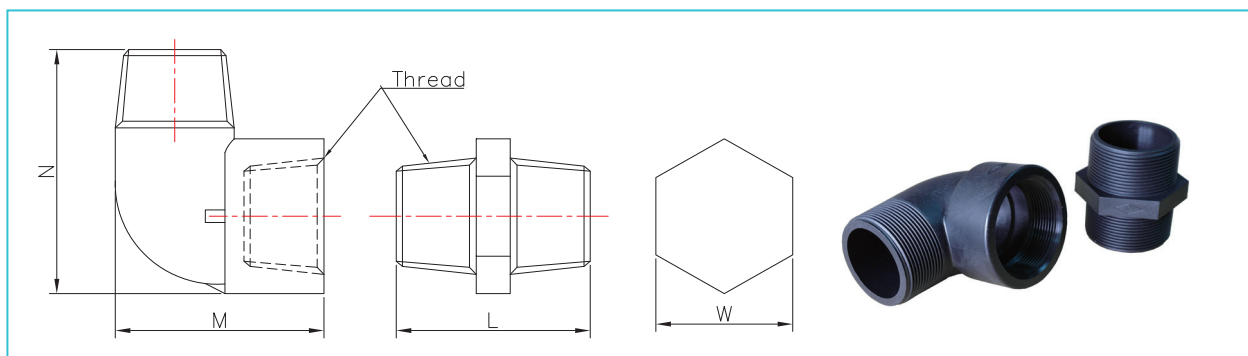
Dimensions

Model No.	Thread inch	L mm	M mm	N mm	W mm	Weight (kg)	Material
BC-10	PT-1"	52	52	73	38	0.36	Cast Iron
BC-12	PT-1 1/4"	56	65	90	47	0.57	Cast Iron
BC-15	PT-1 1/2"	60	73	97	54	0.87	Cast Iron
BC-20	PT-2"	67	85	120	65	1.30	Cast Iron
BP-20	PT-2"	75	94	110	67	0.28	Plastic
BC-25	PT-2 1/2"	76	105	137	82	1.86	Cast Iron
BC-40	PT-4"	96	165	233	121	5.40	Cast Iron

BC Type

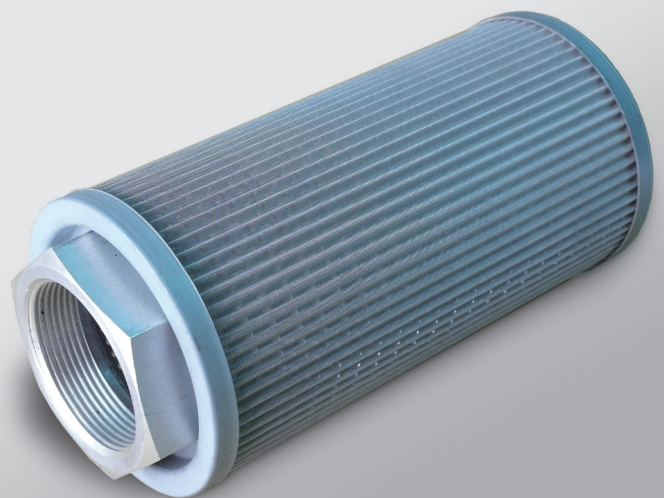
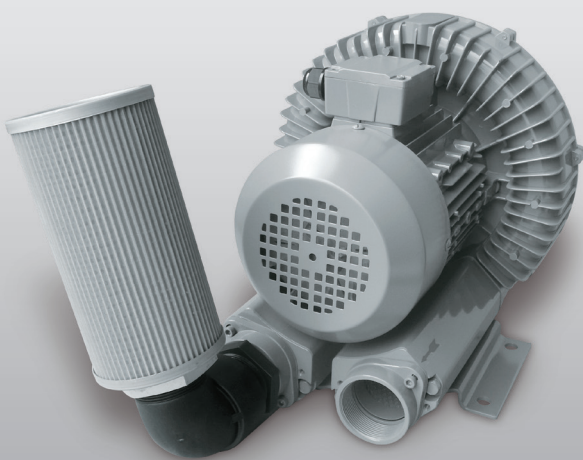
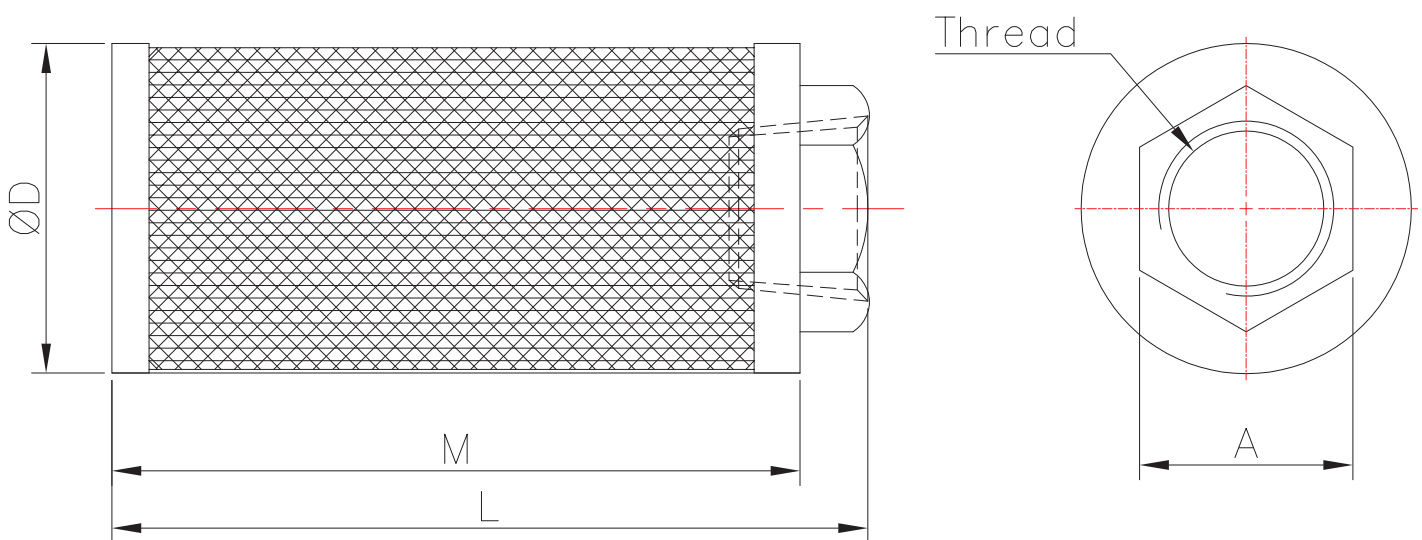


BP Type



Dimensions

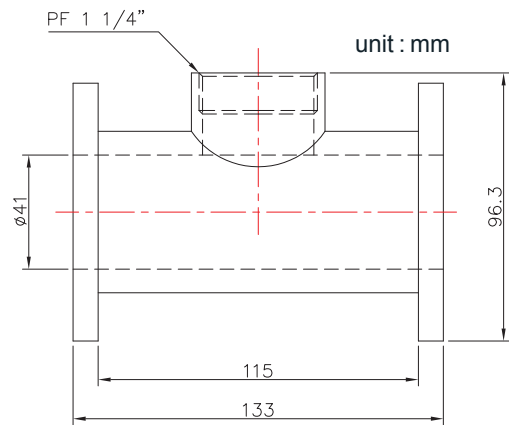
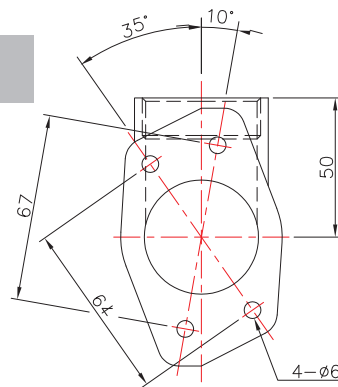
Model No.	Thread inch	A mm	D mm	L mm	M mm	Mesh	Flow (L / Min)	Weight (kg)
MF-08	PT-1"	42	58	170	155	100	110	0.20
MF-10	PT-1 1/4"	54	71	186	170	100	210	0.35
MF-12	PT-1 1/2"	65	85	196	182	100	285	0.49
MF-16	PT-2"	75	103	215	202	100	395	0.65
MF-20	PT-2 1/2"	97	148	274	252	100	750	1.20
MF-32	PT-4"	142	208	380	357	100	1000	2.45



Valve application



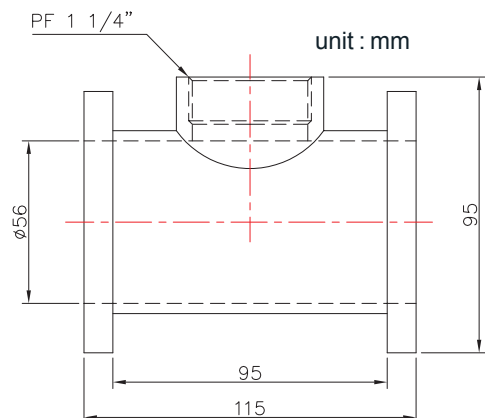
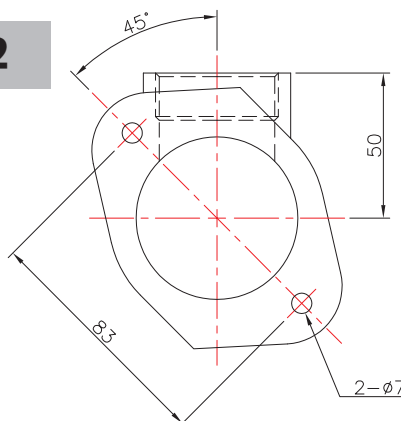
Model No. TP-01



Suitable for

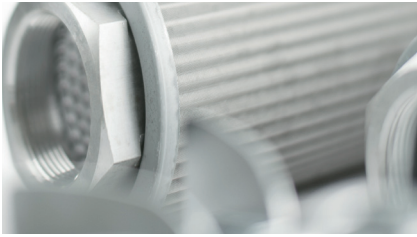
single stage blower	RT-20 / RT-30
two stage blower	RT-23 / RT-33

Model No. TP-02



Suitable for

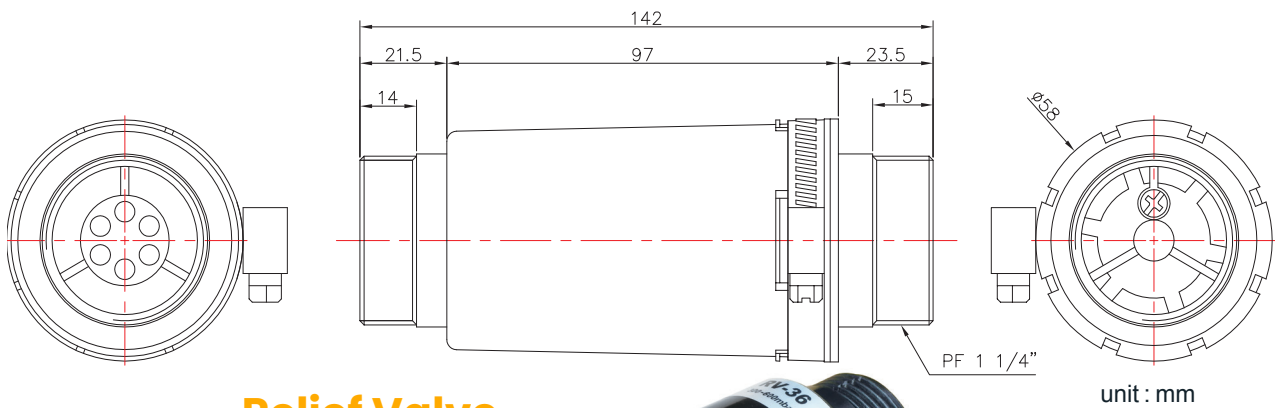
single stage blower	RT-40 / RT-50 / RT-60
two stage blower	RT-43 / RT-63 / RT-64



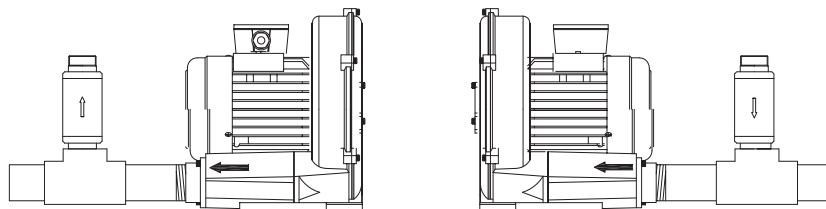
- **combination design**
suitable for vacuum and pressure

Relief Valve (PVC)

Model No.	Thread	Pressure Range
RV-03	PF-1 1/4"	0 ~ 300mbar
RV-36	PF-1 1/4"	300 ~ 600mbar



Relief Valve



Application :

- Used in side channel compressor/vacuum pump and suitable both pressure/vacuum use.
- Static pressure setting easily adjustable.
- Durable operation temperature : -10 ~+120°C
- Connect thread suitable for PT, PF and NPT-1 1/4".
- Keep away from grease or volatile oil/gas.

Relief Valve (Aluminum)

Model No.	Thread	Pressure Range
RV-A03	PF-1 1/4 "	0 ~ 300mbar
RV-A36	PF-1 1/4 "	300 ~ 600mbar

